

The Heart of Roseway Neighborhood

The Roseway Neighborhood Association and Business Association have identified many problems with the existing conditions associated with *automobile-oriented* City land use and transportation policies.

The Roseway Vision Plan calls for improvements to facilitate pedestrian access across the intersection and enhance the livability of the neighborhood.



A recent Pedestrian/MV accident spurred the RNA to send a letter to Commissioner Adams:

Traffic FLIES through this intersection and down Fremont Ave!

Dear Commissioner Adams: (excerpt)

The Roseway Neighborhood Association Vision Plan includes several focus areas for improvement related to pedestrian and traffic calming measures and include:

- Improved pedestrian connections, bicycle safety and traffic calming measures on NE Sandy and NE Fremont Blvd.
- Updating Pedestrian Master Plan showing pedestrian routes in Roseway
- Updating Bicycle Master Plan to show bicycle routes in Roseway
- Improve street crossings and installation of new crossings where needed

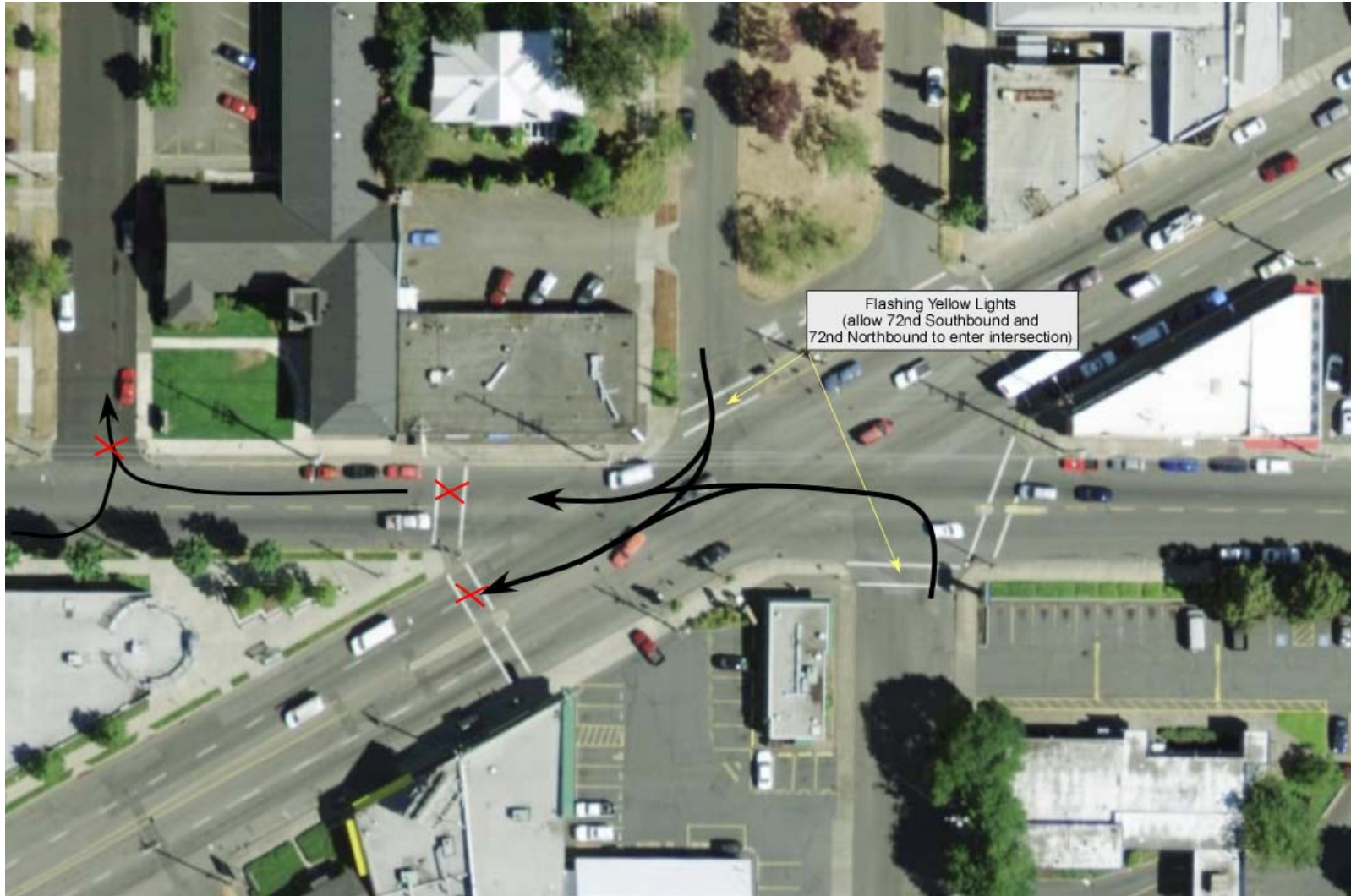
The very traffic routes that help keep our neighborhood vital are also a liability in the absence of adequate traffic calming measures, or other pedestrian protections. It is my hope, and the hope of the Roseway Neighborhood Association, that together we can work with your office to address these safety concerns.

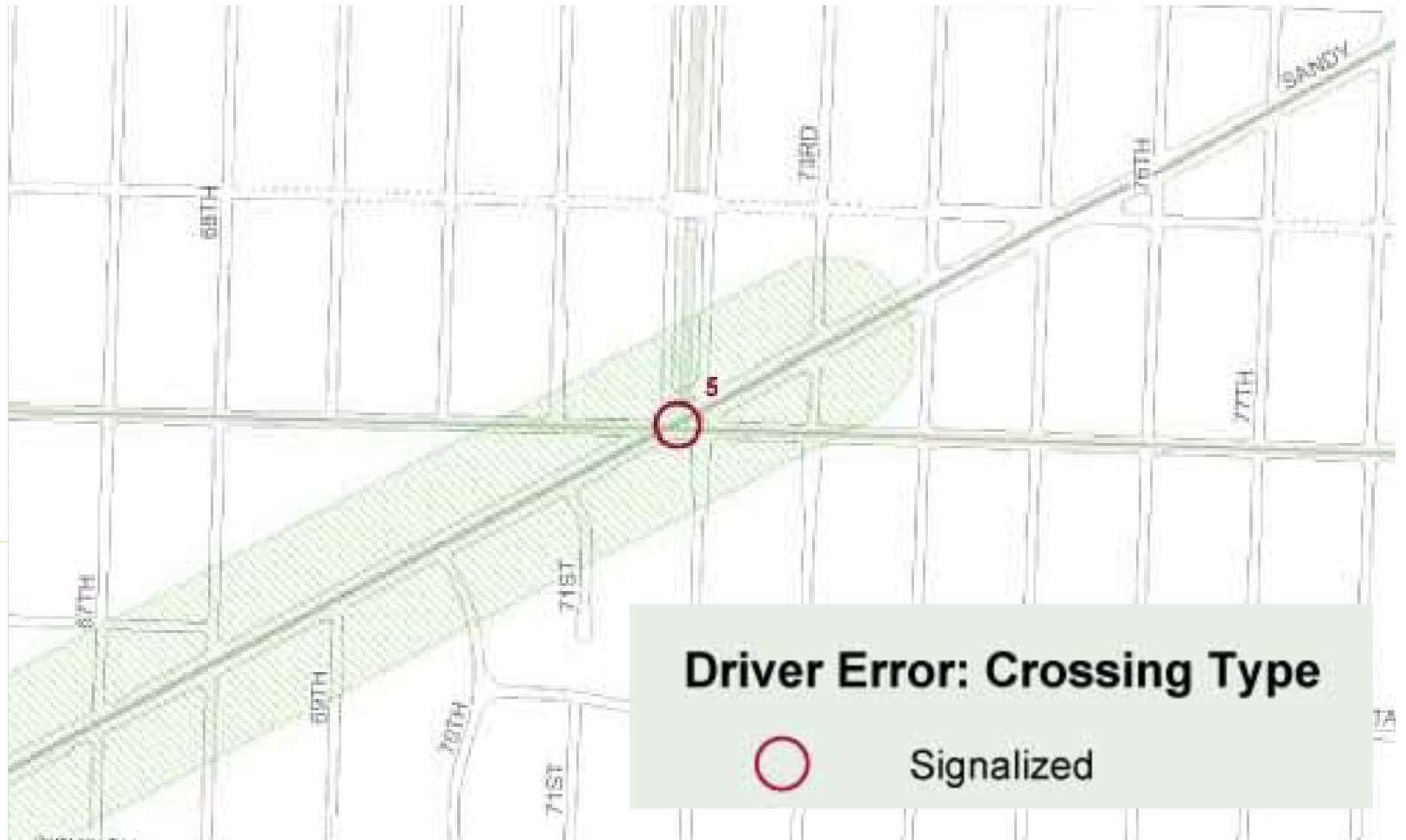
Sincerely,

Tyler P. Whitmire

Roseway Neighborhood President on Behalf of Kim Monaco

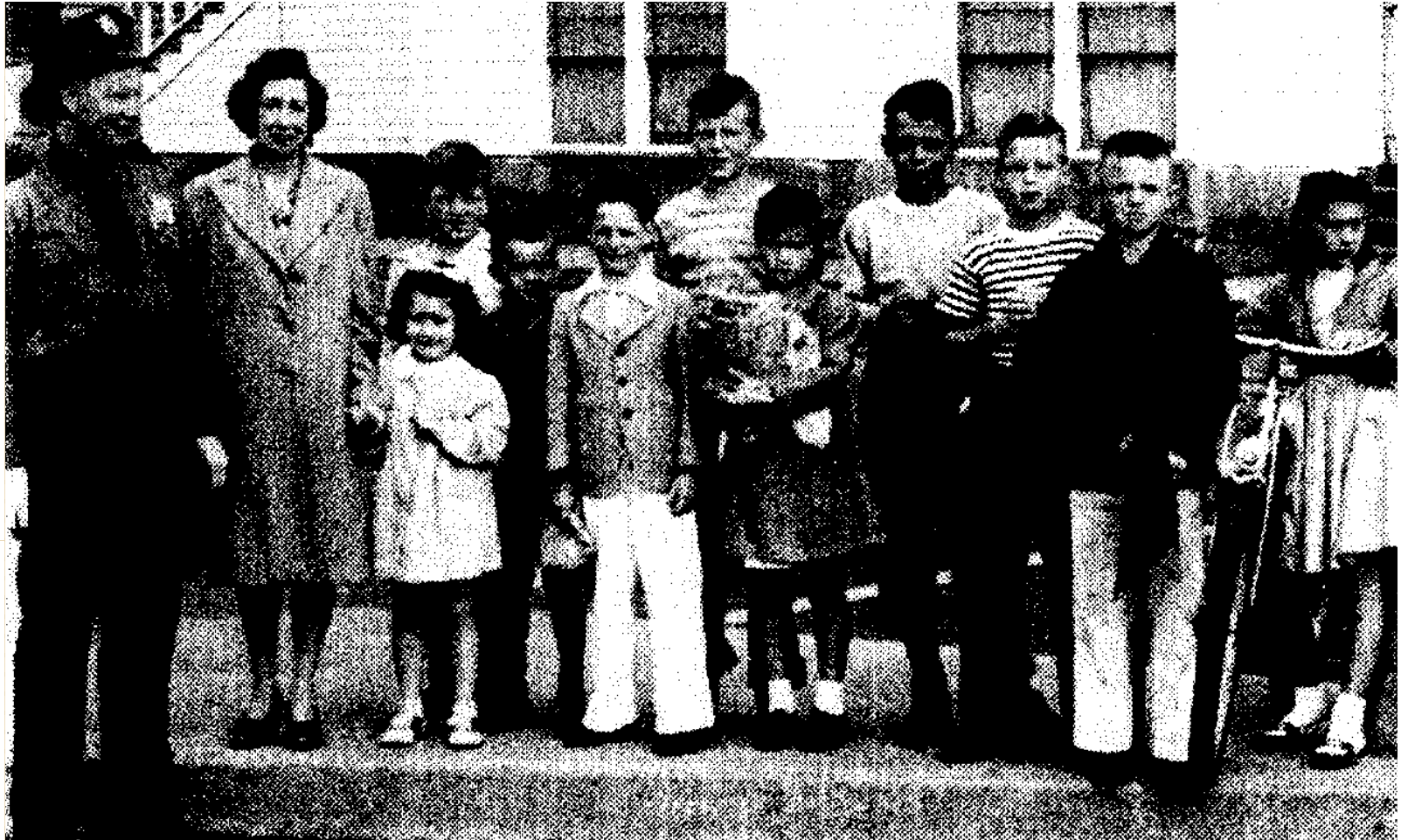
Pedestrian Safety Issues due to 72nd Ave.





Child Pedestrian Injuries

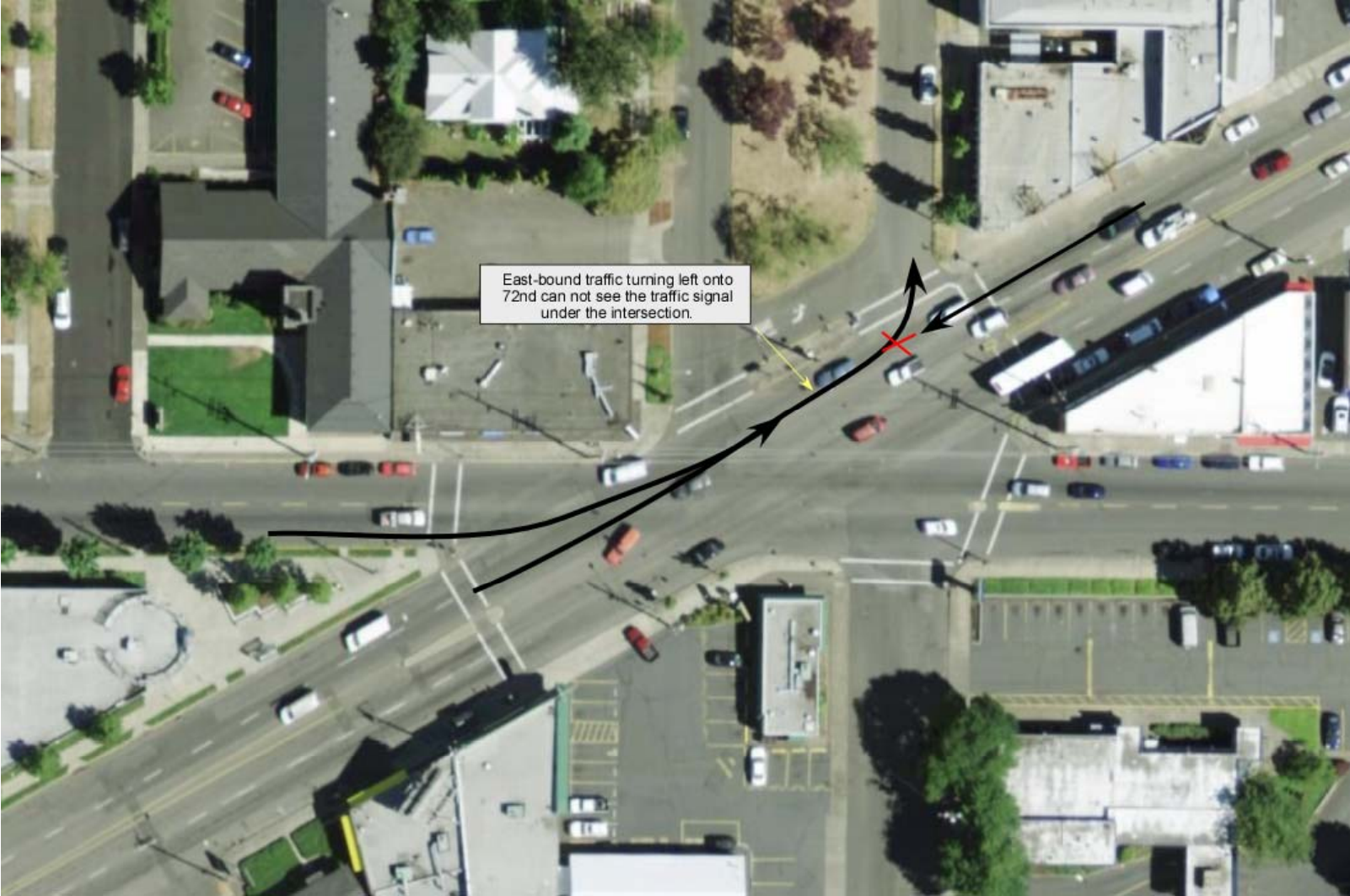
Source: Neighborhood Crash Map (1995-2004)



1947 Schoolchildren Escort

The Sandy Business Association organized pedestrian escort via two patrolmen. So in fact conditions have gotten worse since then!

Left Turn issues onto 72nd Ave. Northbound (Bicycles and Automobiles)



Various options for this intersection were investigated by a group of PSU students in 2005:

The first two options for this intersection were investigated by a group of PSU students in 2005.

Whatever solution is chosen should also enhance neighborhood liveability; not just assist the flow of automobile traffic !

1. Split the signal under 72nd Ave. Southbound
2. Closure of one or both of the 72nd Ave. Park blocks to Auto traffic. (My own personal favorite!)
3. A traffic circle at the intersection (what about pedestrians and bicycles!)
4. Improve pedestrian crossings by marking crosswalks at all intersections.
5. Increase pedestrian walk signal times.
6. Install a traffic light at the eastern side of the 72nd/Sandy intersection such that left turning traffic knows the intentions of oncoming traffic.



Roseway Sandy Streetscape Concept Plan Preferred Alternative

Creates additional park space by eliminating access to Sandy Blvd from 72nd South. Also includes a truck turnaround across the park blocks.



Potential for greatness on Sandy Exists!