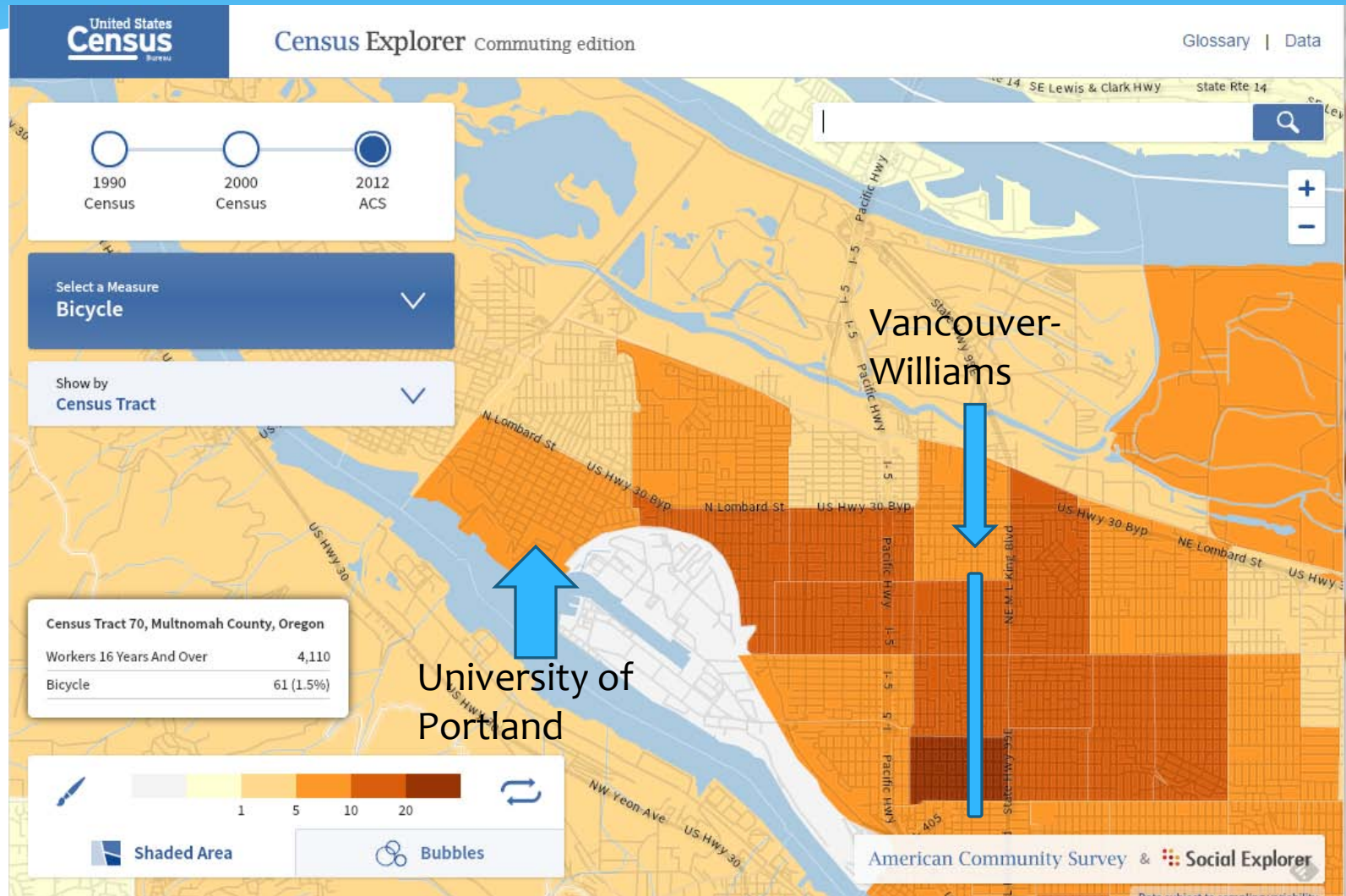
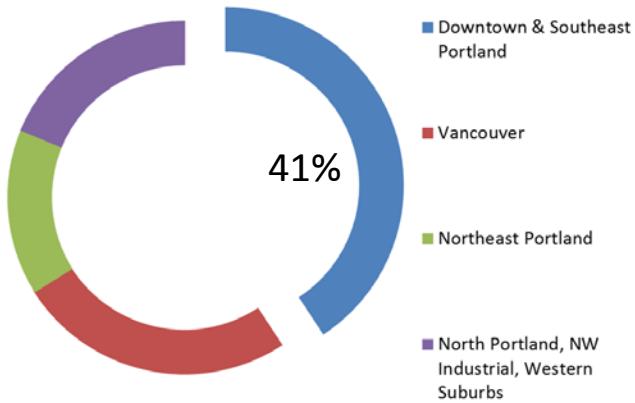


Where do people commute by bike?

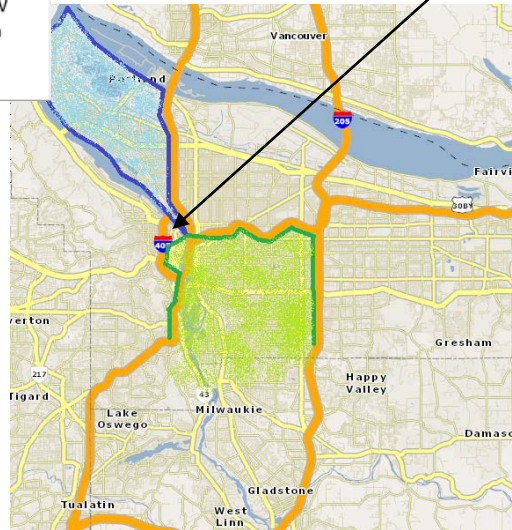


A key connection

People living in North Portland (97217) working within 10 miles from home go to...

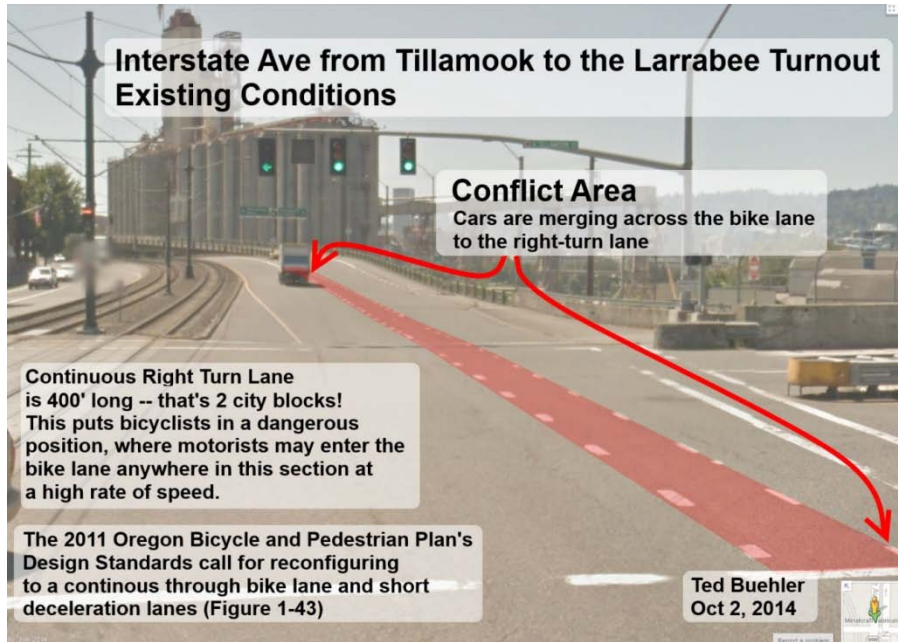


Source: Census LEHS map and author's estimates



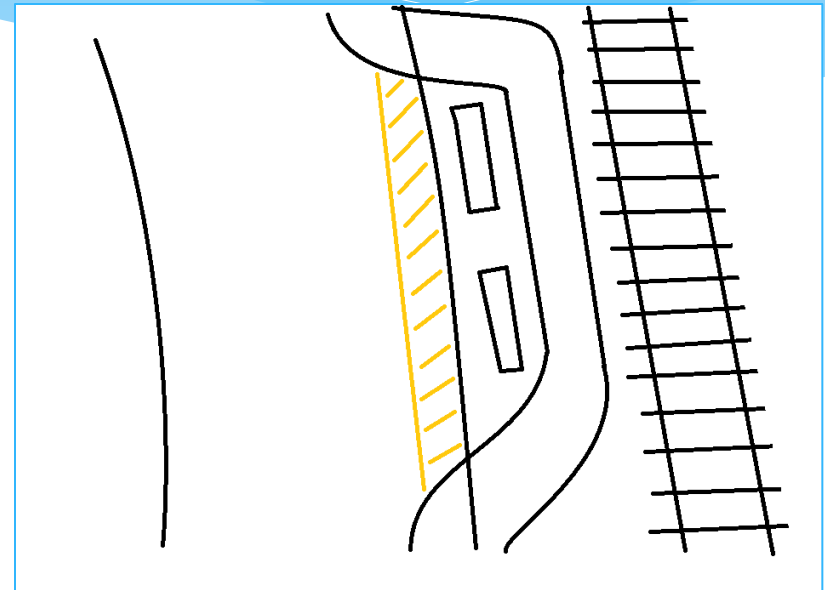
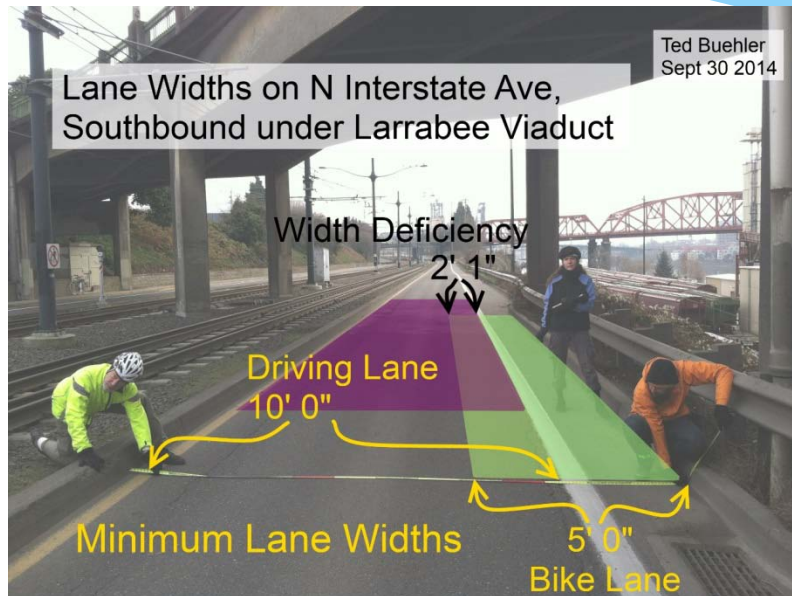
More info: <http://interstateavenue.weebly.com>

Part 1: Tillamook to Larrabee



More info: <http://interstateavenue.weebly.com>

Part 2: Interstate Under Larrabee



From a PBOT Traffic Engineering Report from Mark Haines (3/25/2014): “[...] Bridge columns narrowed the pavement width by approximately two feet for a length of approximately 70 feet. That width was taken entirely out of the bike lane [...] I recommend referring the request to a CIP list for future consideration.”

More info: <http://interstateavenue.weebly.com>