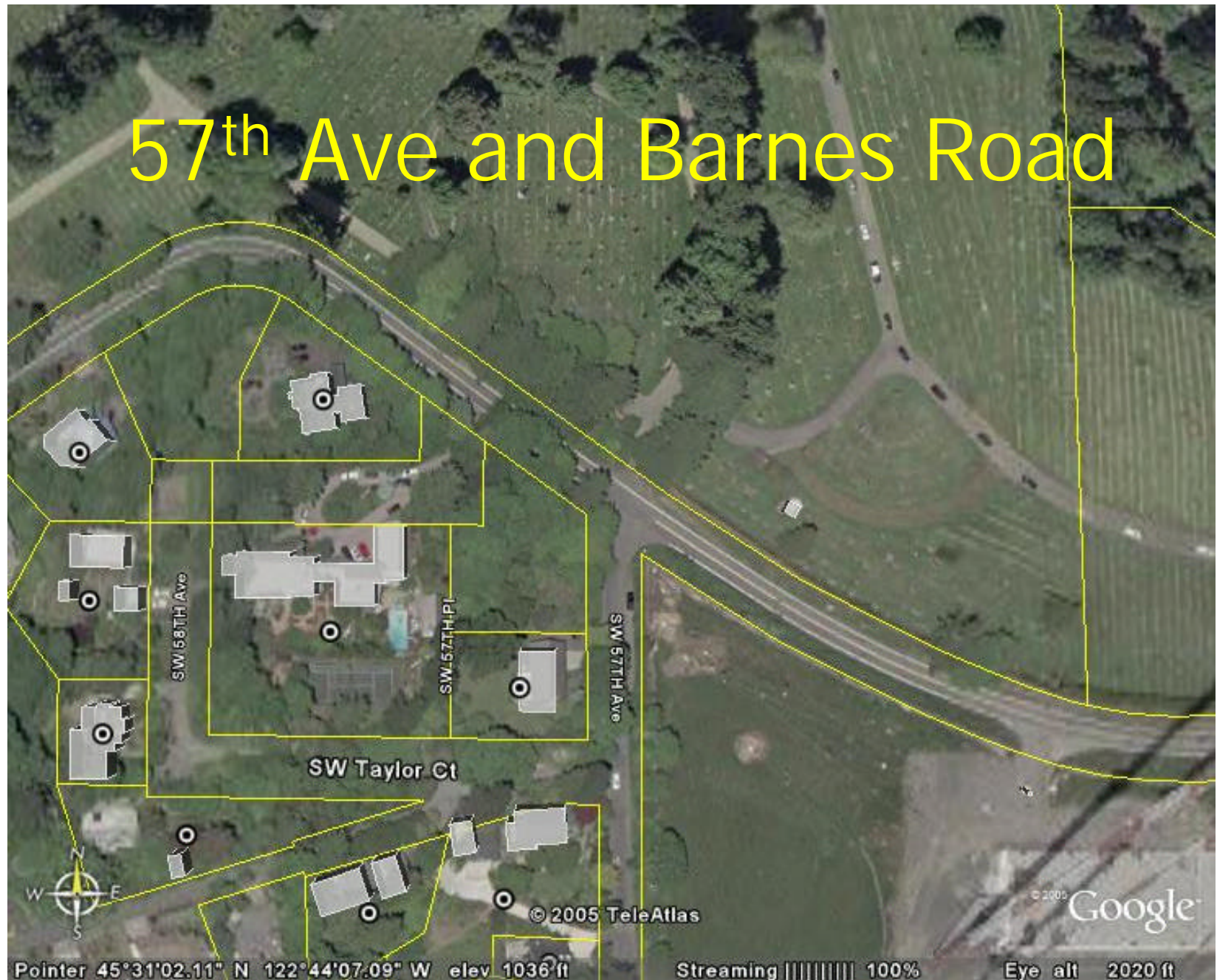


57th Ave and Barnes Road





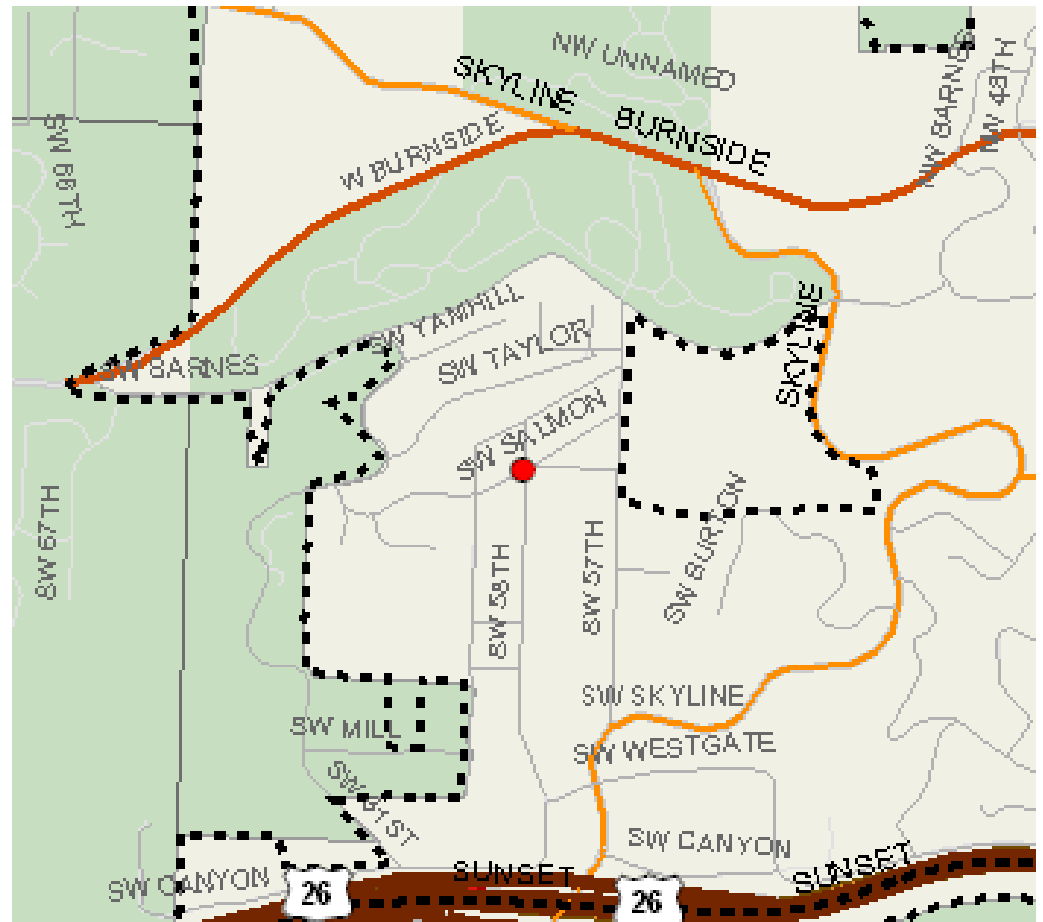


Traffic Counts

| Location | Date | Type | Total | East | West | North | South |
|--------------------------------|-------------|------|-------|------|------|-------|-------|
| SW 57th Ave, S/SW Barnes Rd | 5-Aug-2004 | Vol | 1722 | | | 790 | 932 |
| SW Salmon St, W/SW 57th Ave | 10-Mar-2004 | Vol | 2040 | 908 | 1132 | | |
| SW 58th Ave, S/SW Salmon St | 5-Aug-2004 | Vol | 1888 | | | 884 | 1004 |
| SW Barnes Rd, W/SW Skyline Blv | 1-Mar-2004 | Vol | 1579 | 813 | 766 | | |

Traffic Classifications

-  Regional Trafficway
-  Regional Trafficway & Major City Traffic Street
-  Major City Traffic Street
-  District Collector
-  Neighborhood Collector
-  Traffic Access Street
-  Local Service Traffic Street



Traffic Calming Proposal

Curbing that creates a 90 degree turn from Barnes Road onto SW 57th Ave from the west

- ✓Traffic starts at a slower speed
- ✓Maintains residential climate
- ✓Removes the illusion that SW 57th Ave is a short cut
- ✓Safer for pedestrians who walk through this intersection